



June 25, 2024

David Simon
Valencia Pipe Company
28305 Livingston Ave
Valencia, CA 91355

**RE: Valencia Pipe Company
Two Compartment HDPE Septic Tanks
1000 and 1500 Gallon (Model Numbers 87-41720 and 87-41760)
With TB-4-18 Inlet and Outlet Baffle Tees**

Dear Mr. Simon:

After reviewing the information submitted for the Valencia Pipe Company IAPMO-certified HDPE Septic Tank (1000 and 1500-gallon capacities), SNHD finds that the products meet all requirements of the *Southern Nevada District Board of Health Regulations Governing Individual Sewage Disposal Systems and Liquid Waste Management*.

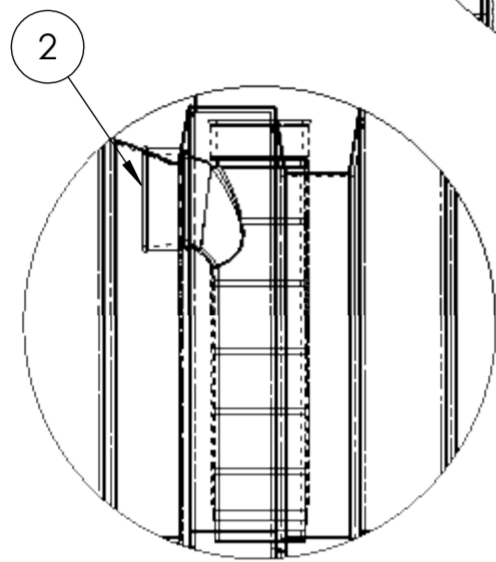
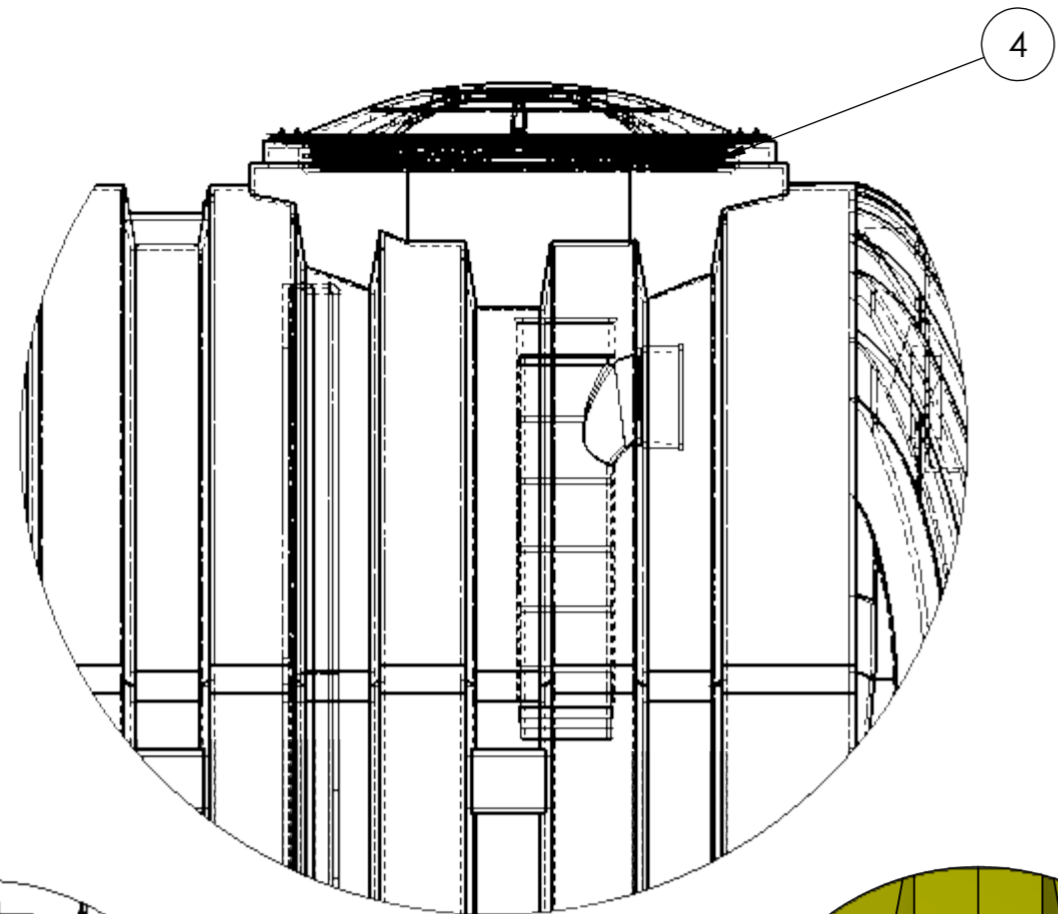
The above-referenced products are **APPROVED** for use in Clark County and will be placed on the SNHD list of approved septic tanks. This approval is valid only for tanks that are constructed according to the attached design plans; any modification to the design will require additional review by SNHD.

Please contact Dan Isler at septics@snhd.org or (702) 759-0660 if you have any questions.

Sincerely,

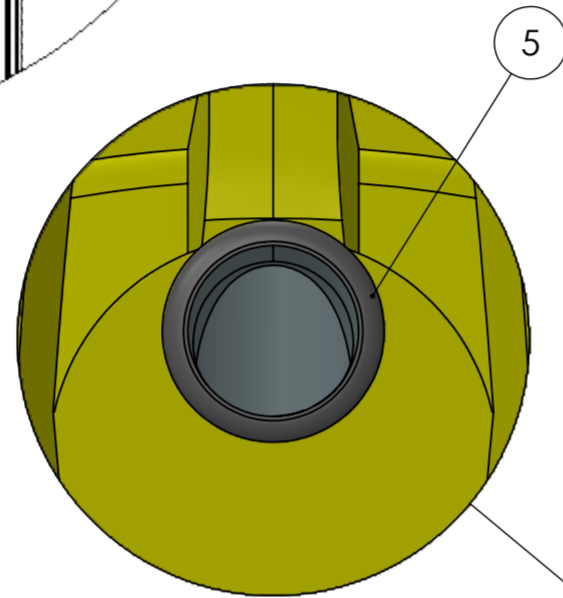
ENVIRONMENTAL HEALTH DIVISION

Dan Isler, P.E., REHS
Environmental Health Engineer/Supervisor
ISDS Program

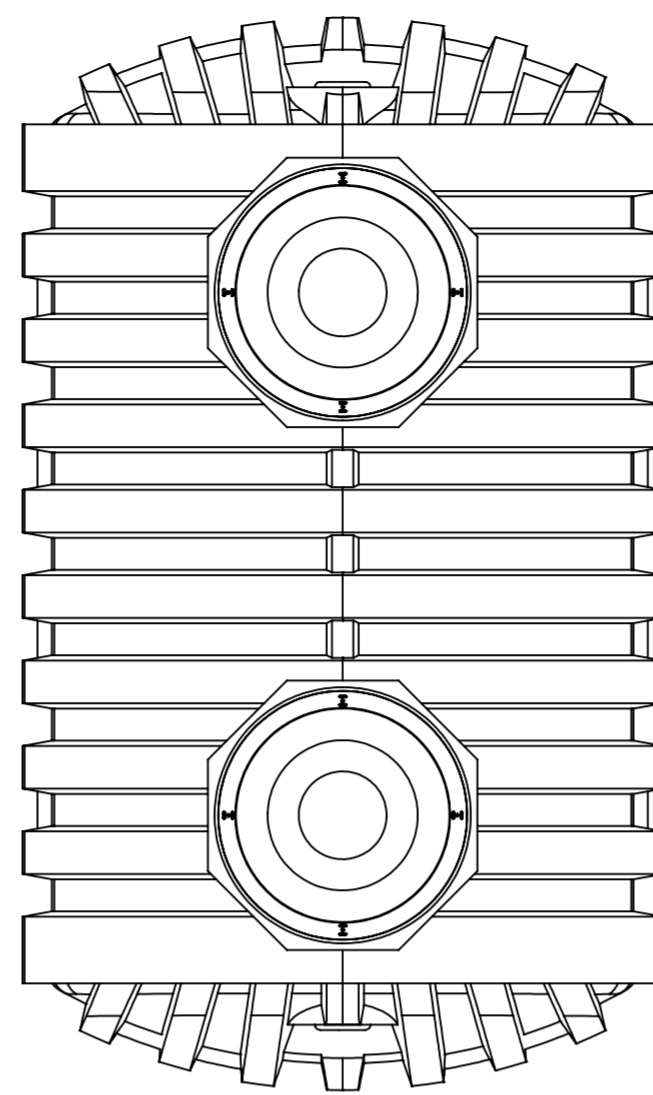


DETAIL H
SCALE 1:9

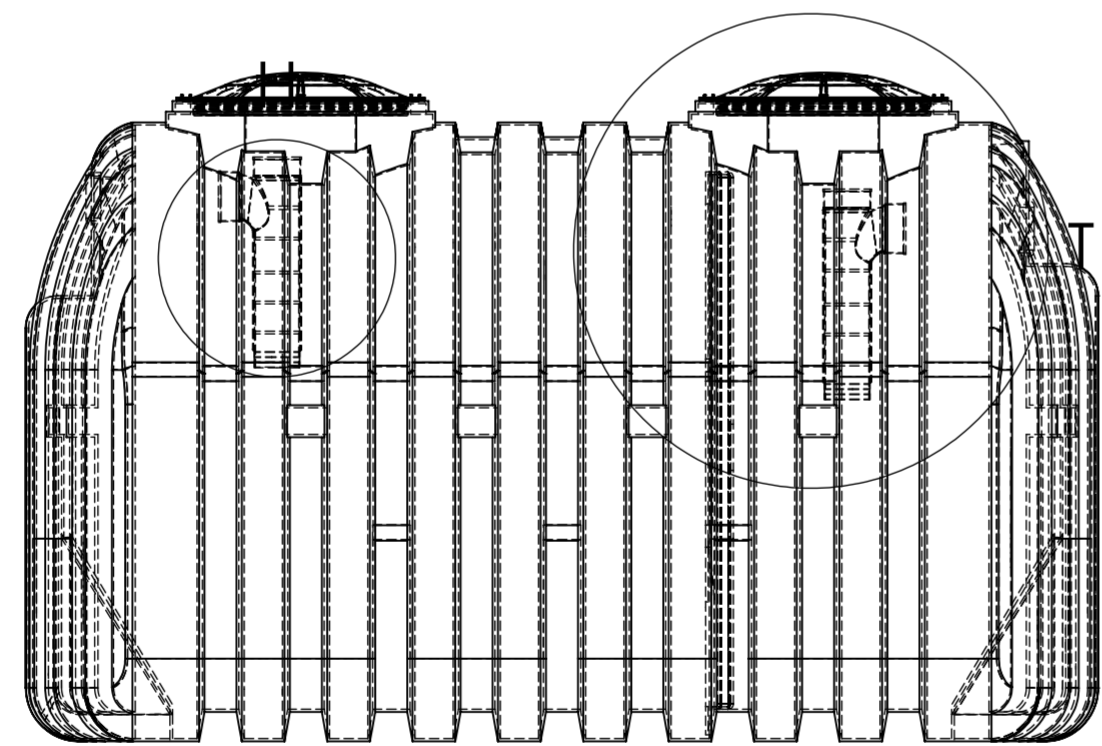
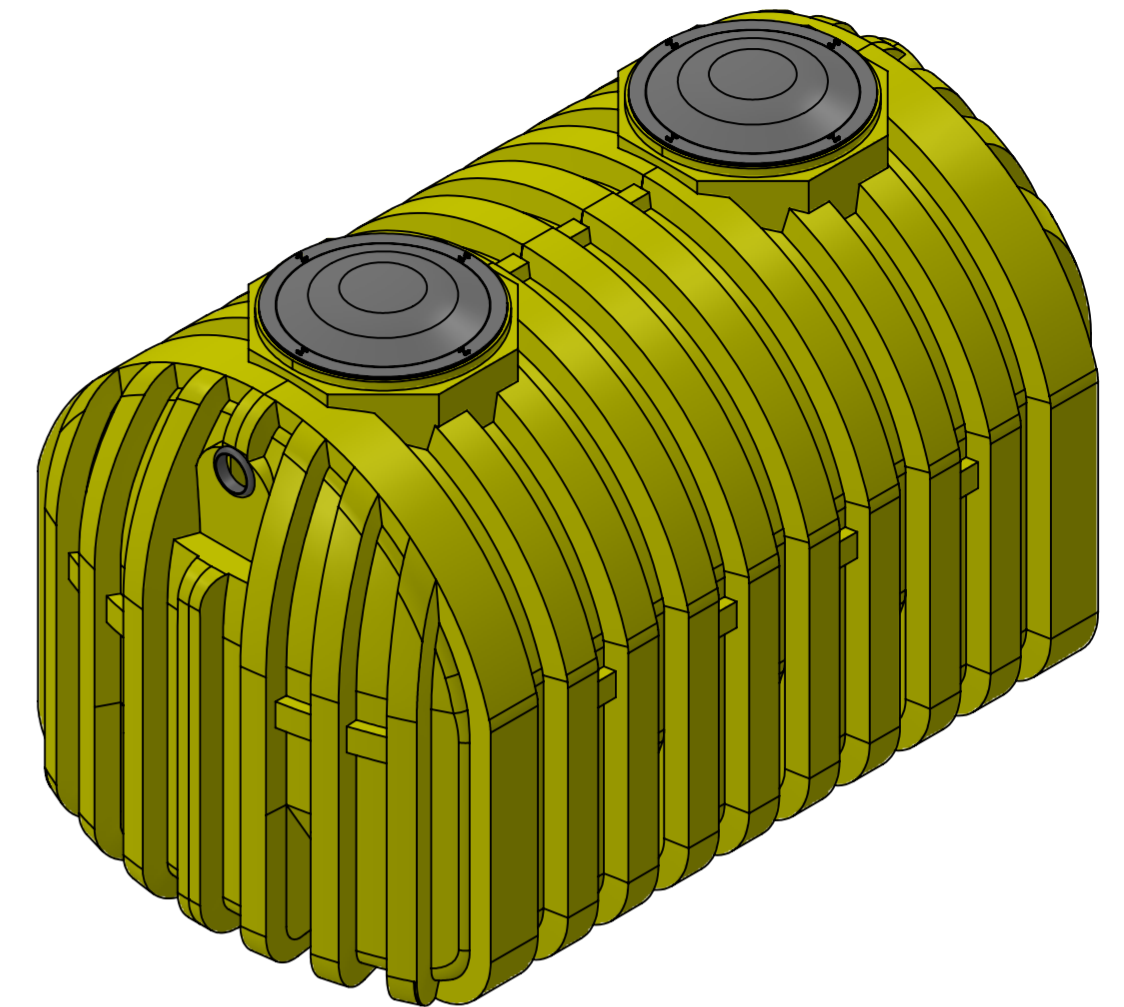
DETAIL T
SCALE 1:9



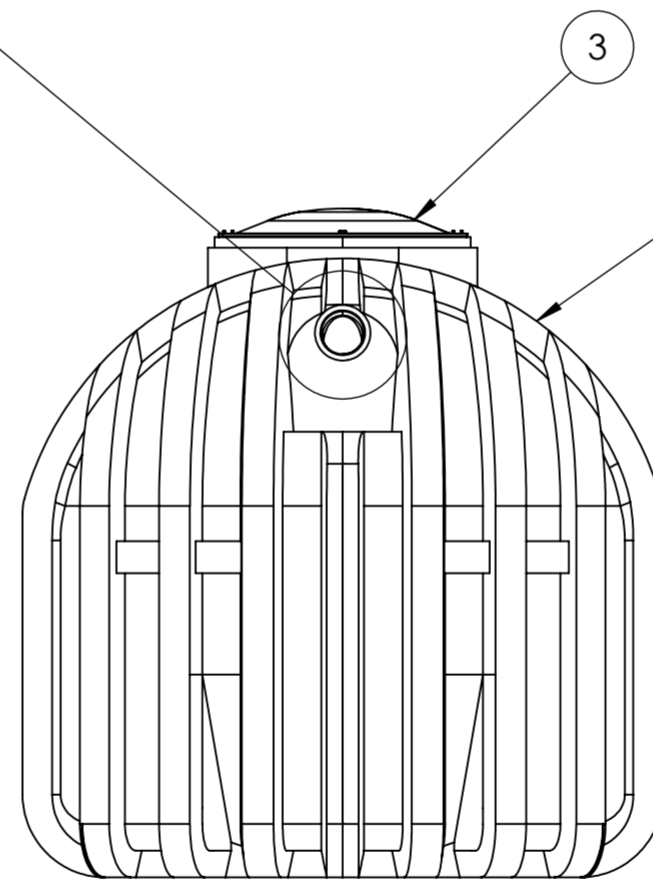
DETAIL R
SCALE 1:4.5



TOP VIEW



VIEW



FRONT VIEW

Operating Volume (Gls)
Primary Compartment: 670
Secondary Compartment: 330

Complies with FDA standards 21 CFR 177.1520 (1) 3.1 and 3.2
3 year limited warranty

Municipal and County codes may vary from your state approval.
Please make sure you consult with your local sanitation department
or plumber on requirements.

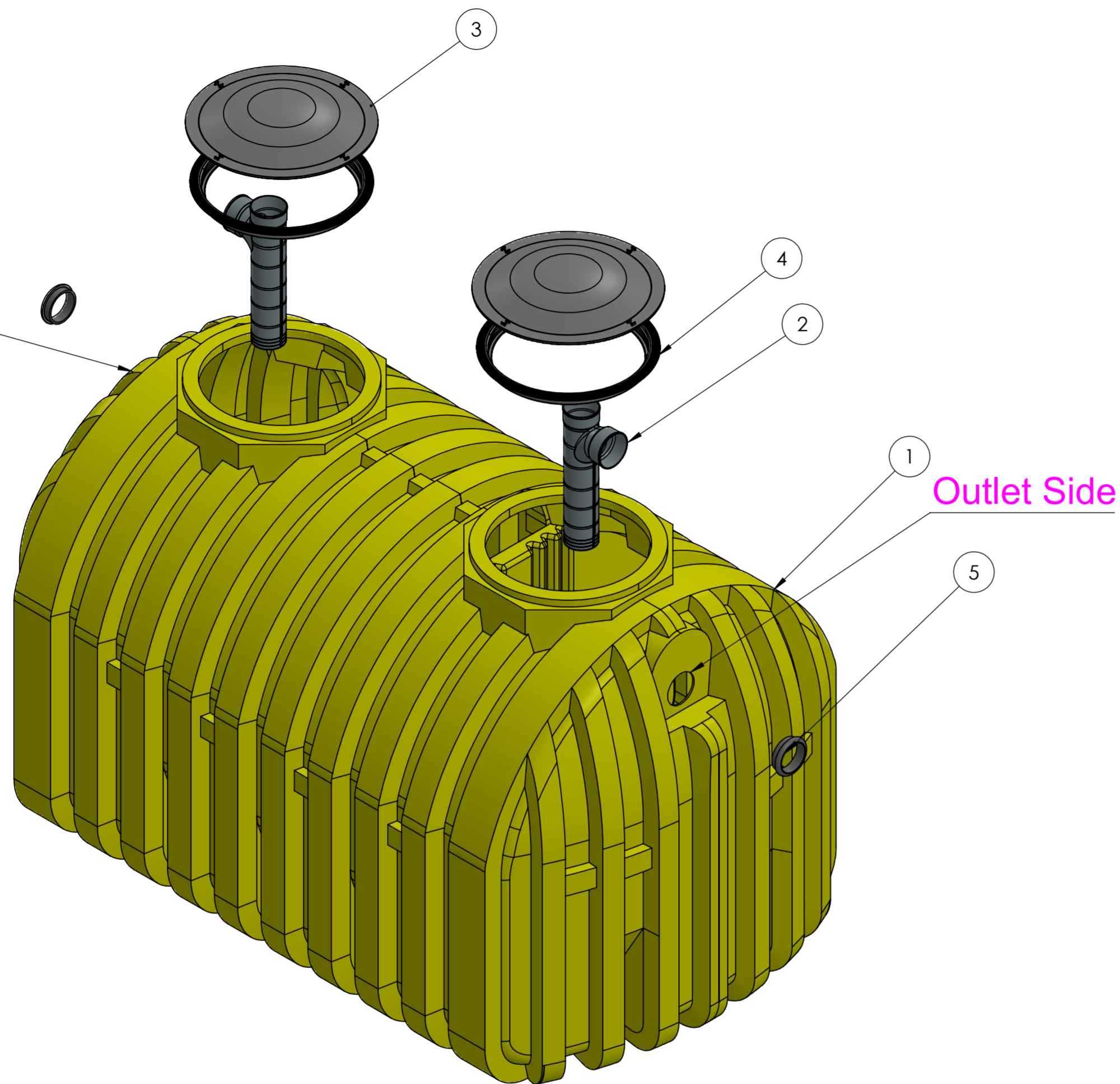
UV resistant BPA Free HDPE
Empty weight: 311
Shipping Class: 300
Includes 2 4" tees and gaskets



ITEM #	MFGR PART #	DESCRIPTION	QTY
1	87-41720	1000g 2C HDPE Septic Tank	1
2	SPL-BR-004	4 Inch Inlet/Outlet Tee	2
3	85-SPL-001-L	20" Black Domed Lid; SS Screws	2
4	WTL-001-FM	Tank Adapter Ring	2
5	85-SPL-ER-G	4 Inch Gasket	2

UNLESS OTHERWISE SPECIFIED: DIMENSIONS ARE IN MILLIMETERS		FINISH:		DEBURR AND BREAK SHARP EDGES		DO NOT SCALE DRAWING		REVISION	
SURFACE FINISH:									
TOLERANCES:									
LINEAR:									
ANGULAR:									
DRAWN	NAME	SIGNATURE	DATE			TITLE:		87-41720 1000 GALLON TWO COMPARTMENT HDPE SEPTIC TANK	
CHK'D						DWG NO.:		A2	
APP'VD						SCALE:1:18		SHEET 1 OF 7	
MFG						WEIGHT:			
Q.A.									

Inlet Side



Outlet Side

Exploded View

Operating Volume (Gls)
 Primary Compartment: 670
 Secondary Compartment: 330

Complies with FDA standards 21 CFR 177.1520 (1) 3.1 and 3.2
 3 year limited warranty

Municipal and County codes may vary from your state approval.
 Please make sure you consult with your local sanitation department
 or plumber on requirements.

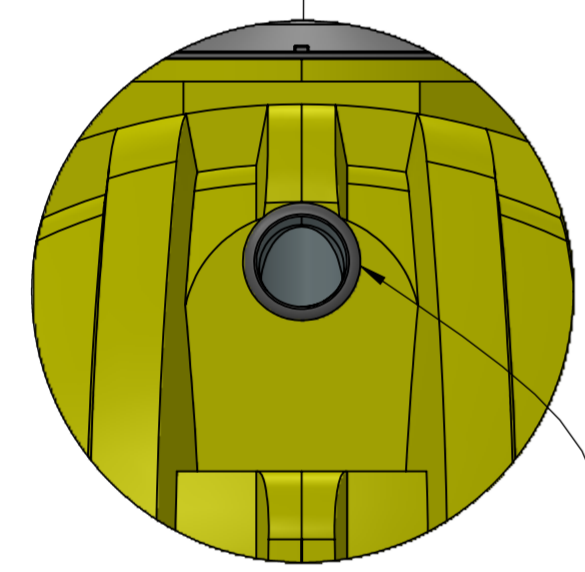
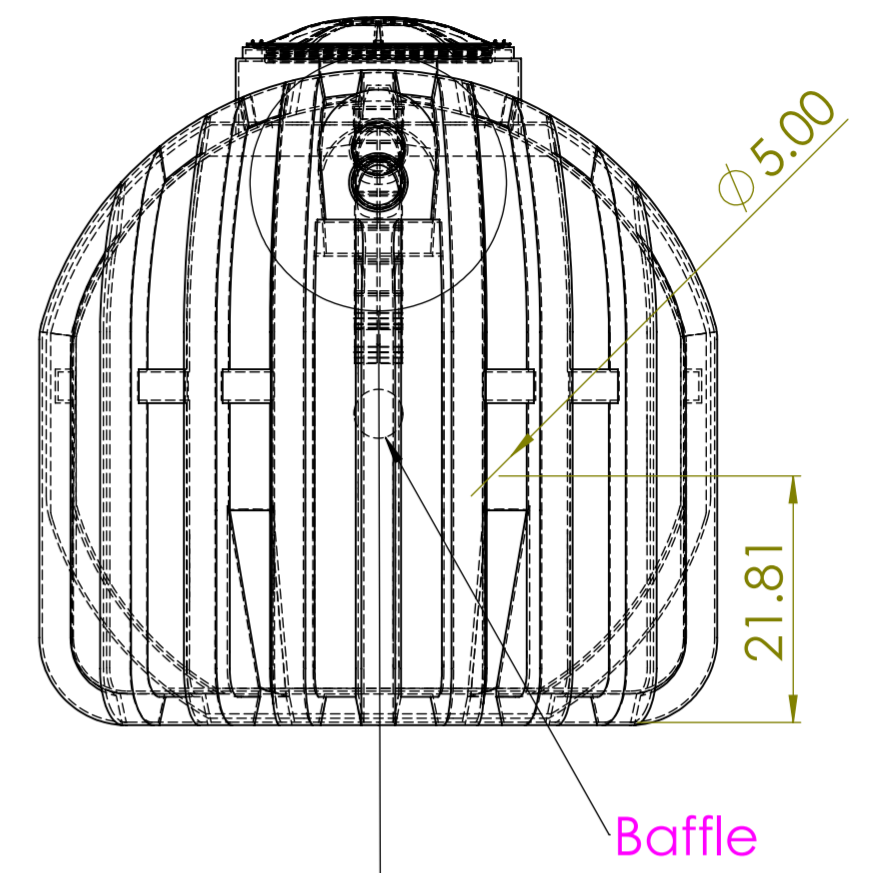
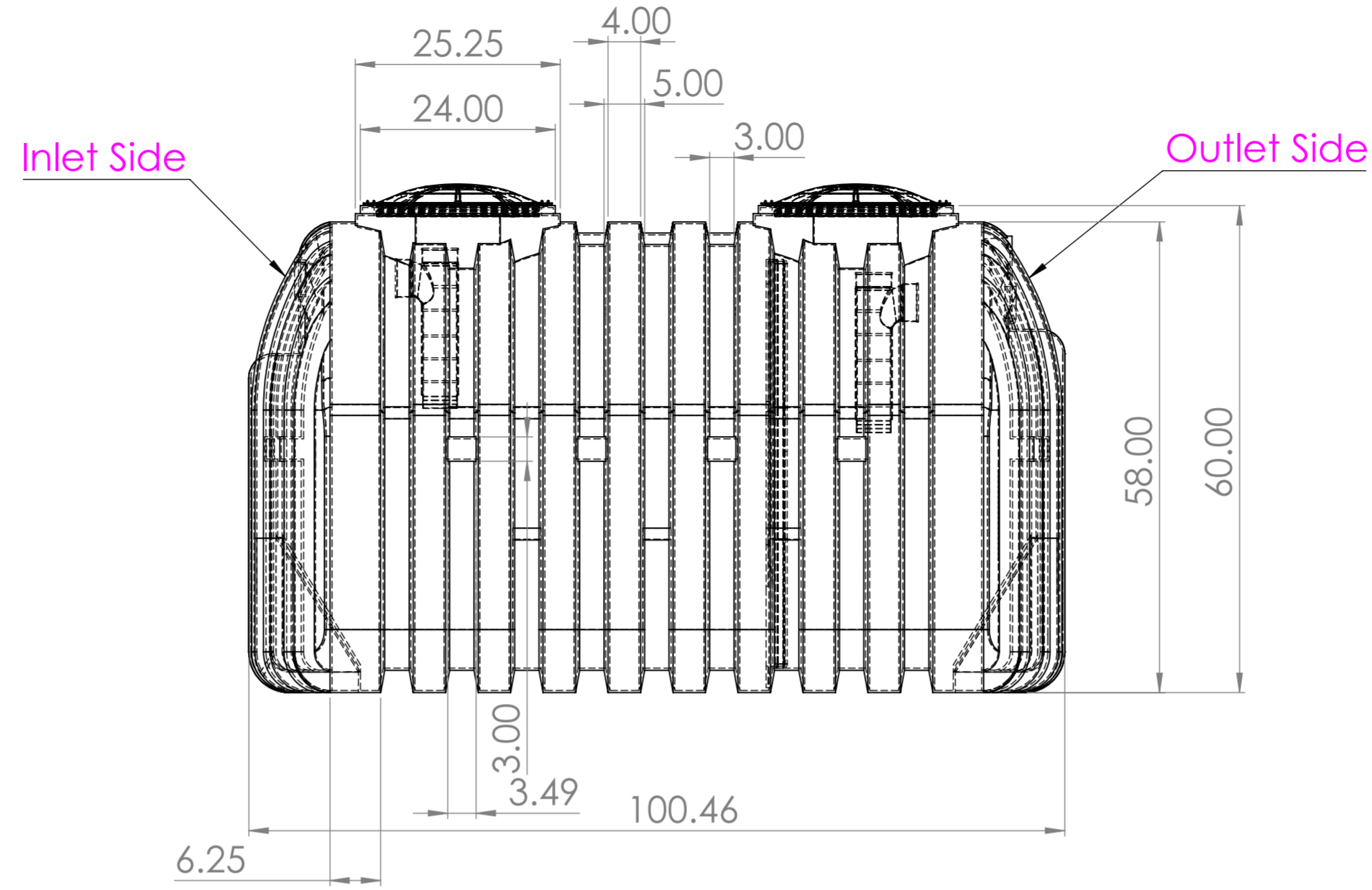
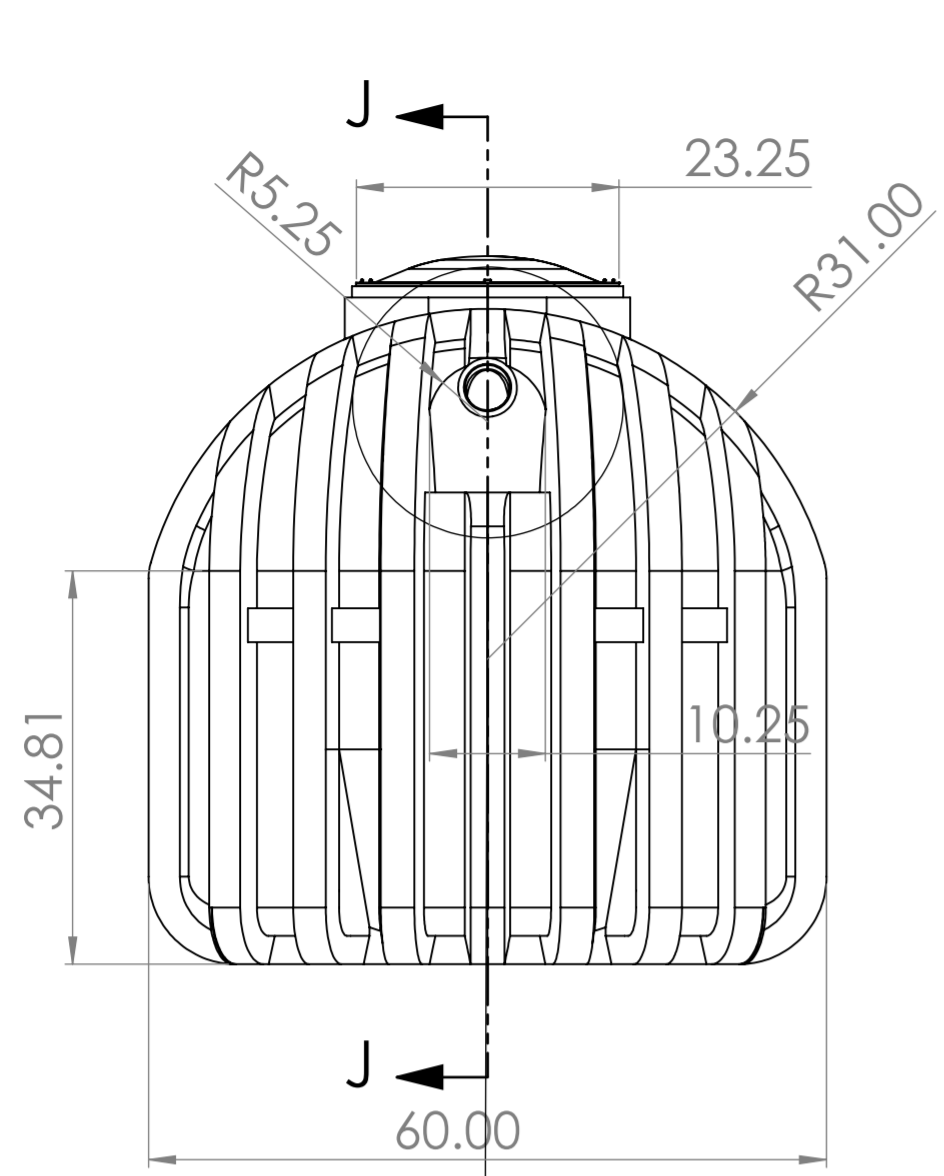
UV resistant BPA Free HDPE
 Empty weight: 311
 Shipping Class: 300
 Includes 2 4" tees and gaskets



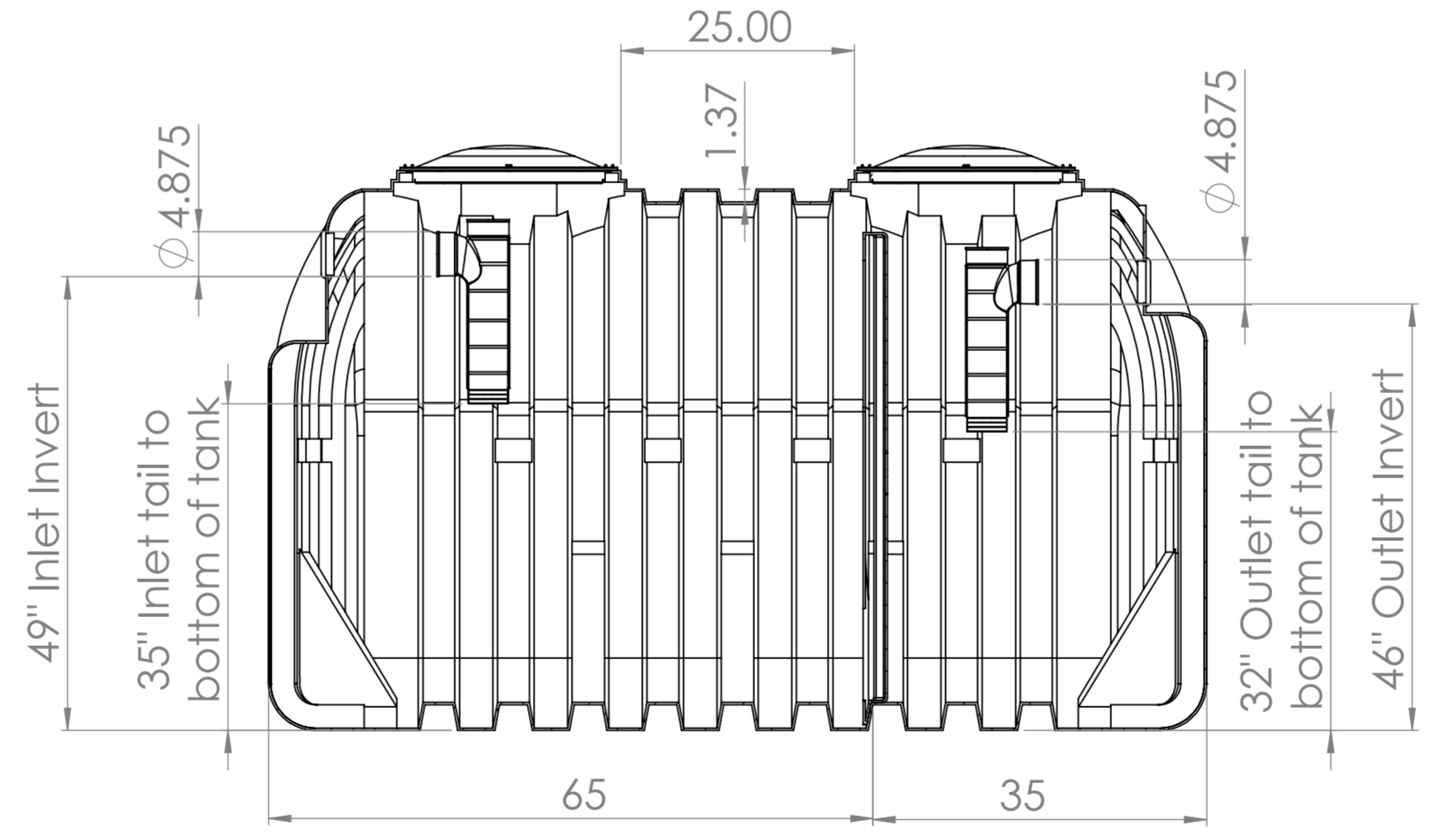
ITEM #	MFGR PART #	DESCRIPTION	QTY
1	87-41720	1000g 2C HDPE Septic Tank	1
2	SPL-BR-004	4 Inch Inlet/Outlet Tee	2
3	85-SPL-001-L	20" Black Domed Lid; SS Screws	2
4	WTL-001-FM	Tank Adapter Ring	2
5	85-SPL-ER-G	4 Inch Gasket	2

UNLESS OTHERWISE SPECIFIED: DIMENSIONS ARE IN MILLIMETERS		FINISH:		DEBURR AND BREAK SHARP EDGES		DO NOT SCALE DRAWING		REVISION	
SURFACE FINISH:		TOLERANCES:		LINEAR:		ANGULAR:		TITLE: 87-41720 1000 GALLON TWO COMPARTMENT HDPE SEPTIC TANK	
DRAWN	NAME	SIGNATURE	DATE	MATERIAL: 098232		DWG NO.		A2	
CHKD				WEIGHT:		SCALE:1:13		SHEET 2 OF 7	
APPVD									
MFG									
Q.A.									

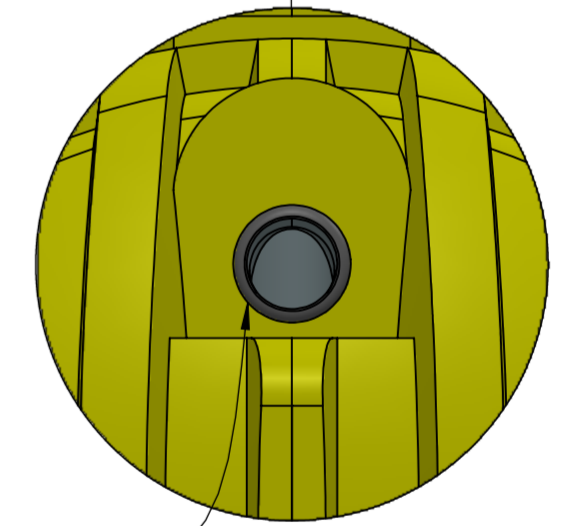




DETAIL W
SCALE 2 : 17



SECTION J-J
SCALE 1 : 17



DETAIL AA
SCALE 2 : 17

4" Gasket
(Inlet Side)

4" Gasket
(Outlet Side)

Operating Volume (Glns)
Primary Compartment: 670
Secondary Compartment: 330

Complies with FDA standards 21 CFR 177.1520 (1) 3.1 and 3.2
3 year limited warranty

Municipal and County codes may vary from your state approval.
Please make sure you consult with your local sanitation department
or plumber on requirements.

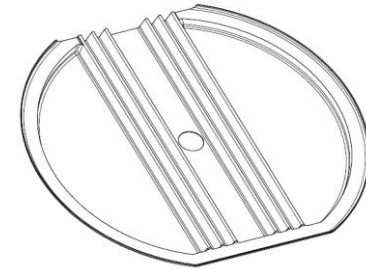
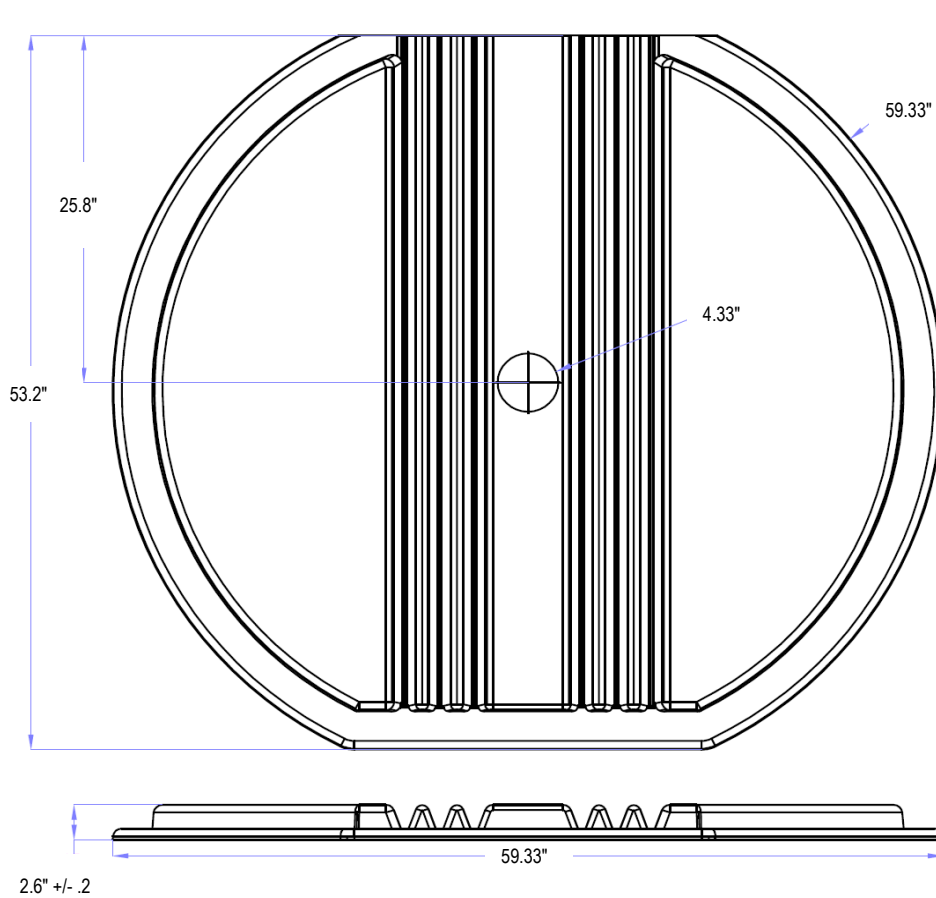
UV resistant BPA Free HDPE
Empty weight: 311
Shipping Class: 300
Includes 2 4" tees and gaskets



UNLESS OTHERWISE SPECIFIED: DIMENSIONS ARE IN MILLIMETERS SURFACE FINISH: TOLERANCES: LINEAR: ANGULAR:			FINISH:	DEBURR AND BREAK SHARP EDGES	DO NOT SCALE DRAWING	REVISION
DRAWN				TITLE:		
CHKD				87-41720 1000 GALLON TWO COMPARTMENT HDPE SEPTIC TANK		
APPVD				DWG NO.		
MFG				SCALE: 1:17		
Q.A.				SHEET 3 OF 7		
NAME	SIGNATURE	DATE	WEIGHT:		A2	



Valencia Pipe Company
1000g Septic Baffle
Part # 1000L



Technical parameters:

1. The product is a single-layer blister, black, HDPE, and thickness of 6mm.
2. The draft angle inside the product cavity is 3 degrees.
3. The surface is flat, the mold font can be read, without obvious wrinkles, cracks, or deformation, and the product edges are free of burrs and sharp corners.
4. All surfaces of the product shall be free of any obvious floating ash, oil stains, water stains, or material scraps, and shall not be bonded with tailings or other miscellaneous materials.
5. The color should be consistent with the color palette. If there is a slight color difference, a distance of 1 meter should be used for daytime outdoor comparison, and there should be no obvious color difference or impurities. The color of the same batch of goods should be consistent.
6. Tolerance requirements: length width ± 5 mm, height ± 5 mm, product weight 9.9kg, weight tolerance ± 0.5 kg.
7. Applicable temperature: $-25^{\circ}\text{C} \sim 55^{\circ}\text{C}$ ($-13^{\circ}\text{F} \sim 131^{\circ}\text{F}$).

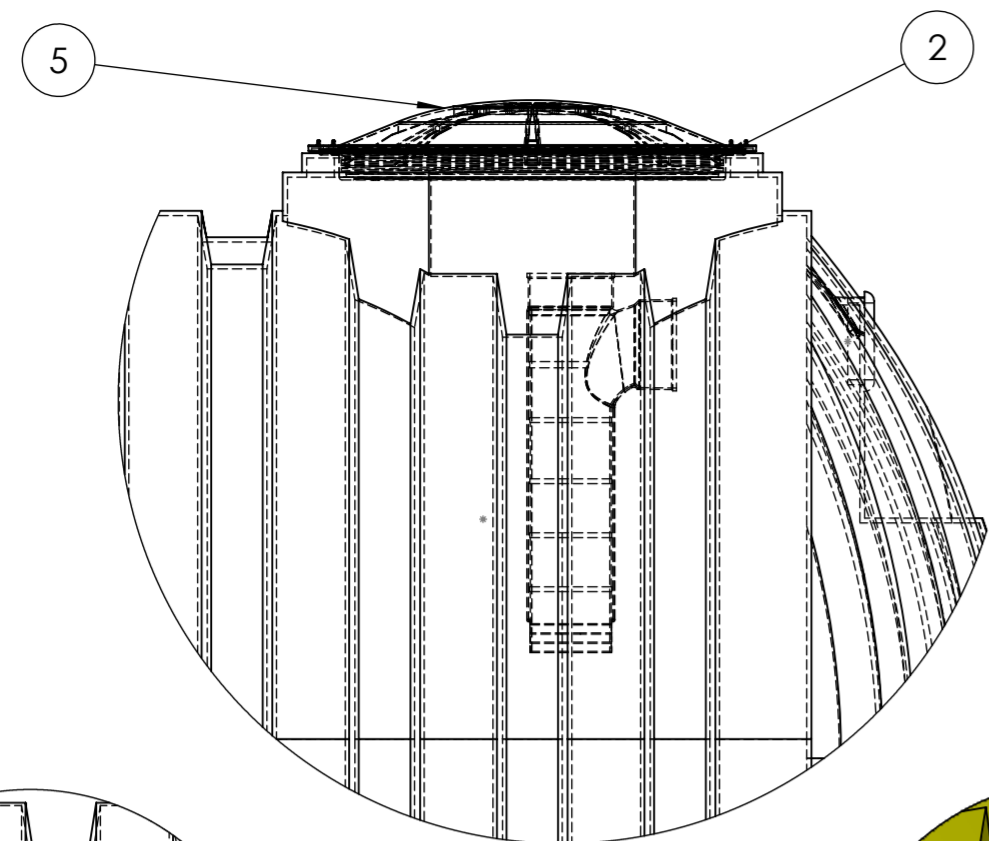
Baffle placement: 65" from side wall to baffle on 2/3 (inlet) side; 35" from side wall to baffle on 1/3 (outlet) side).

UNLESS OTHERWISE SPECIFIED: DIMENSIONS ARE IN INCHES SURFACE FINISH: TOLERANCES: LINEAR: ANGULAR:		FINISH:		DEBURR AND BREAK SHARP EDGES		DO NOT SCALE DRAWING		REVISION	
DRAWN		SIGNATURE		DATE		TITLE:			
CHKD		D. Simon		12/11/2023		1000 GALLON TWO COMPARTMENT SEPTIC TANK INTERNAL BAFFLE			
APPV'D				March 2024					
MFG									
QA									
				MATERIAL: High Density Polyethylene (HDPE)		WEIGHT: 17 lbs		SCALE: SHEET: 1 OF 1	

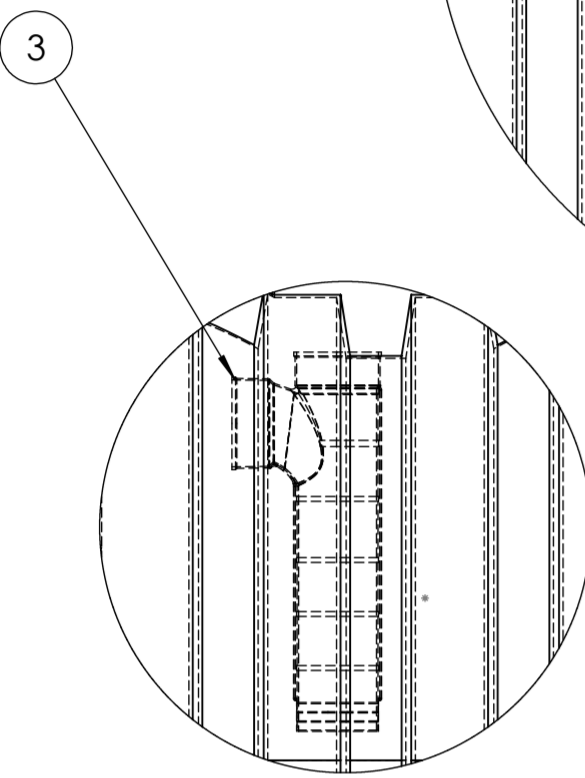
12 11 10 9 8 7 6 5 4 3 2 1

H
G
F
E
D
C
B
A

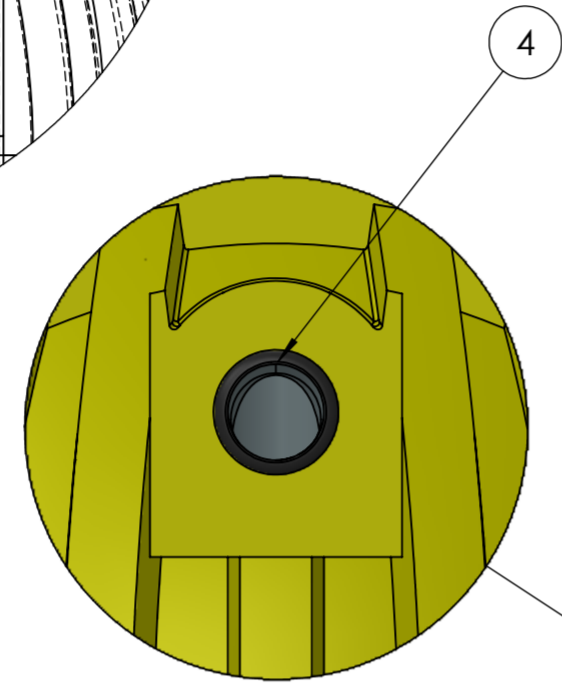
H
G
F
E
D
C
B
A



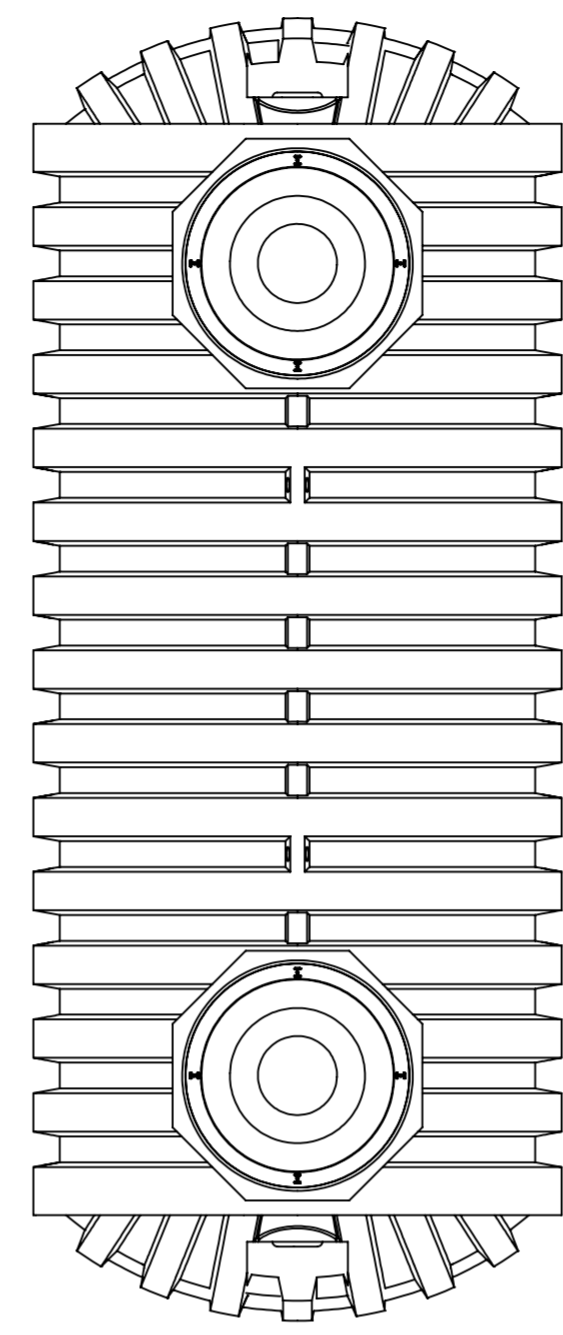
DETAIL B
SCALE 1:10



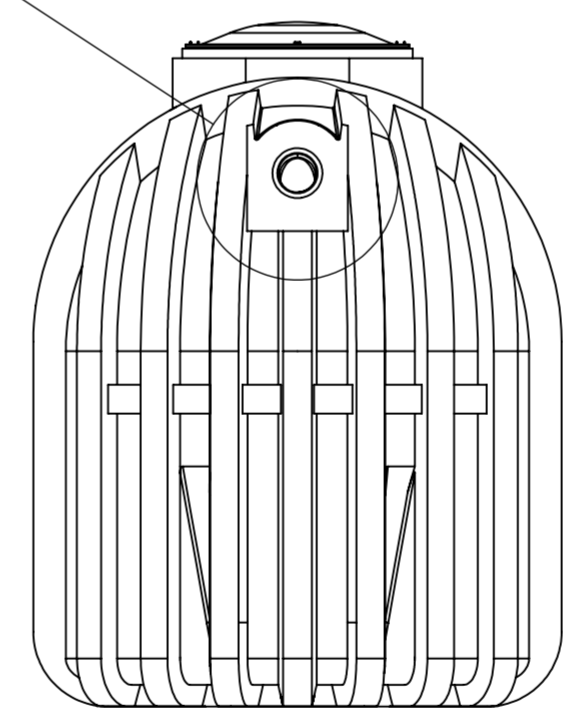
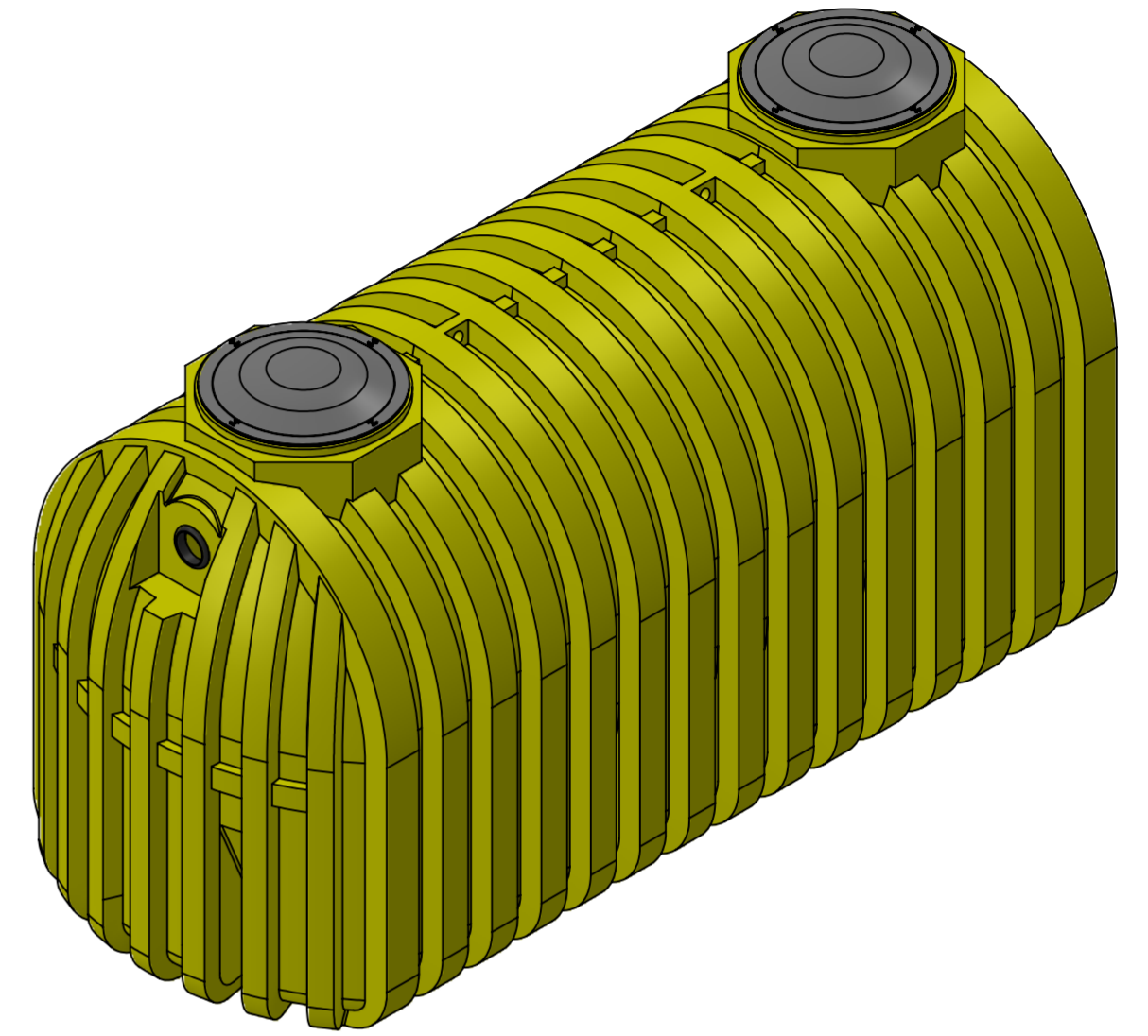
DETAIL C
SCALE 1:10



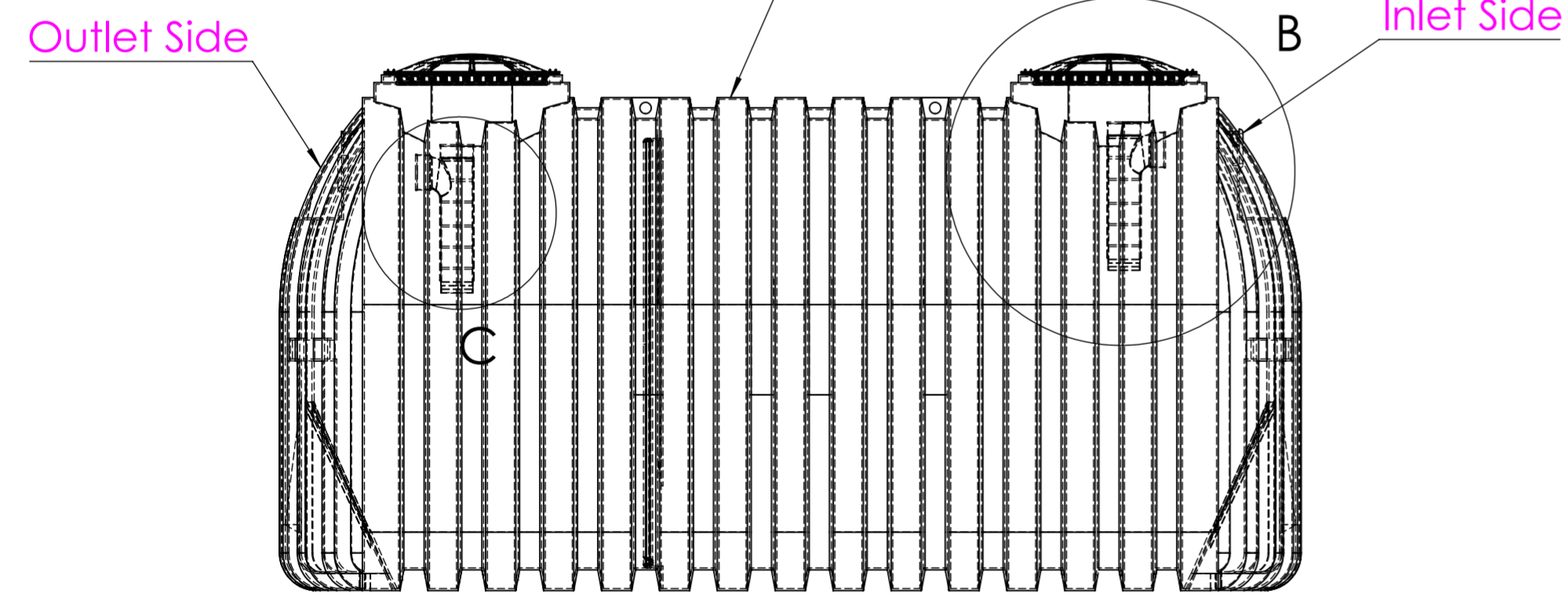
DETAIL F
SCALE 1:8



TOP VIEW



FRONT VIEW



SIDE VIEW

Operating Volume (Gls)
Primary Compartment: 1006
Secondary Compartment: 494

Complies with FDA standards 21 CFR 177.1520 (1) 3.1 and 3.2
3 year limited warranty

Municipal and County codes may vary from your state approval.
Please make sure you consult with your local sanitation department
or plumber on requirements.

UV resistant BPA Free HDPE
Empty weight: 458
Shipping Class: 300
Includes 2 4" tees and gaskets

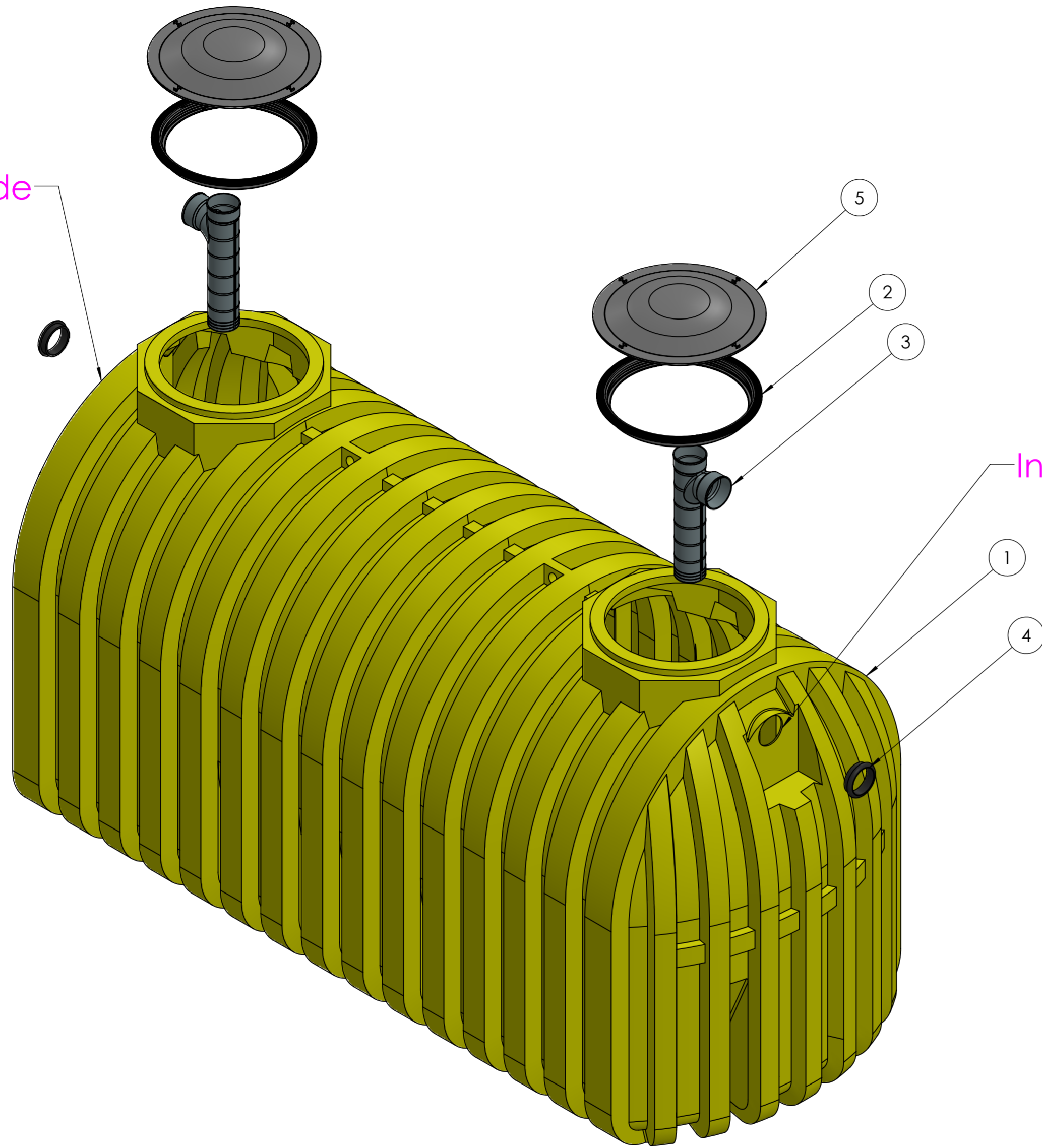


ITEM #	MFGR PART #	DESCRIPTION	QTY
1	87-41760	1500g 2C HDPE Septic Tank	1
2	WTL-001-FM	Tank Adapter Ring	2
3	SPL-BR-004	4 Inch Inlet/Outlet Tee	2
4	85-SPL-ER-G	4 Inch Gasket	2
5	85-SPL-001-L	20" Black Domed Lid; SS Screws	2

UNLESS OTHERWISE SPECIFIED: DIMENSIONS ARE IN MILLIMETERS		FINISH:		DEBURR AND BREAK SHARP EDGES		DO NOT SCALE DRAWING		REVISION	
SURFACE FINISH:									
TOLERANCES:									
LINEAR:									
ANGULAR:									
DRAWN	NAME	SIGNATURE	DATE			TITLE:		87-41760 1500 GALLON TWO COMPARTMENT HDPE SEPTIC TANK	
CHKD						DWG NO.		A2	
APPVD						SCALE:1:20		SHEET 1 OF 7	
MFG									
Q.A.									
				WEIGHT:					

12 11 10 9 8 7 6 5 4 3 2 1

Outlet Side



Inlet Side

Exploded View

Operating Volume (Gls)
 Primary Compartment: 1006
 Secondary Compartment: 494

Complies with FDA standards 21 CFR 177.1520 (1) 3.1 and 3.2
 3 year limited warranty

Municipal and County codes may vary from your state approval.
 Please make sure you consult with your local sanitation department
 or plumber on requirements.

UV resistant BPA Free HDPE
 Empty weight: 458
 Shipping Class: 300
 Includes 2 4" tees and gaskets



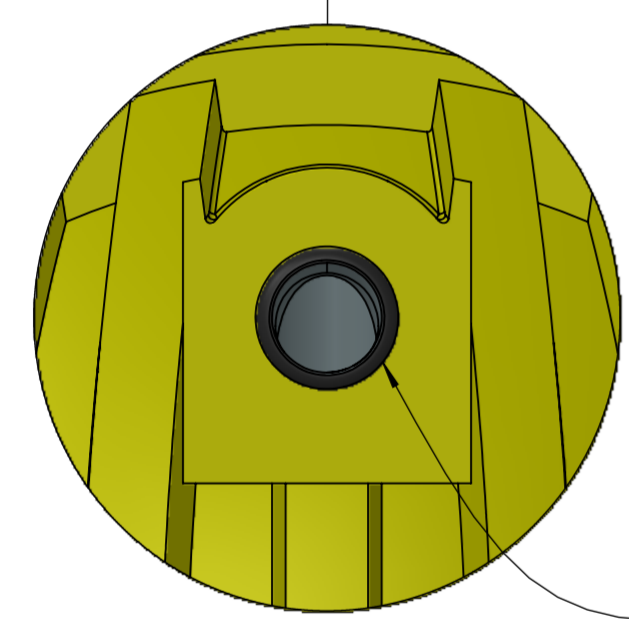
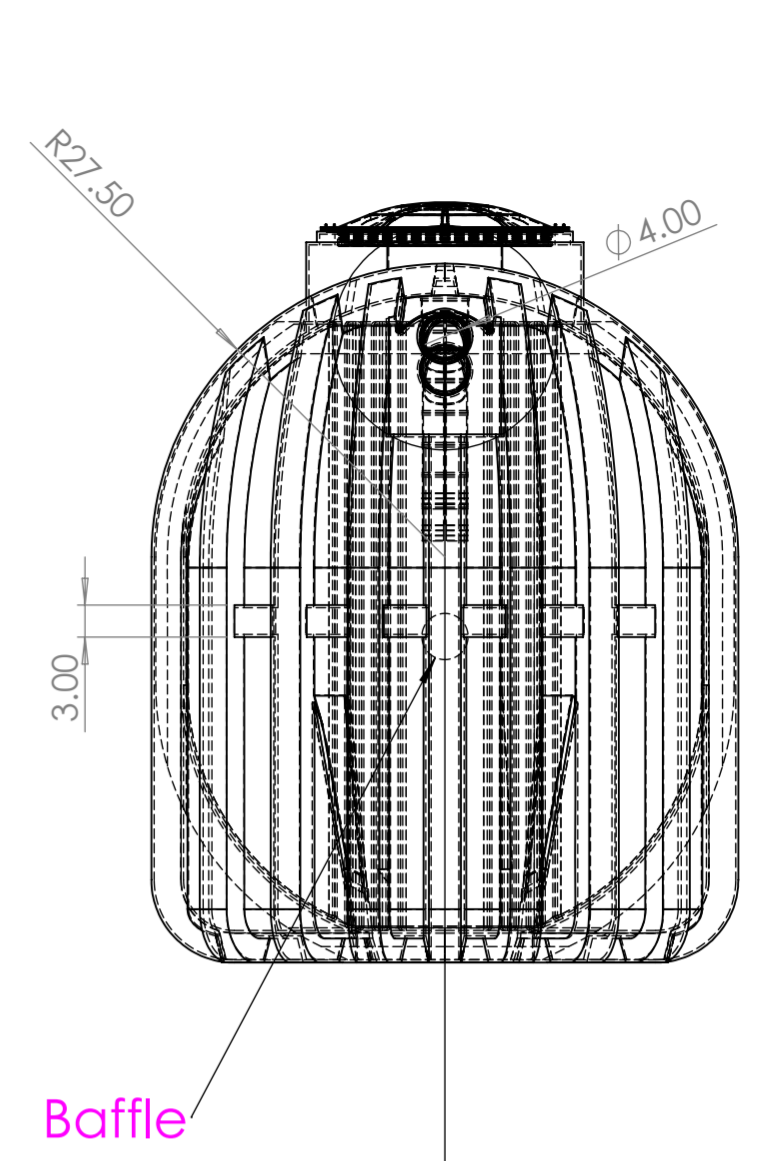
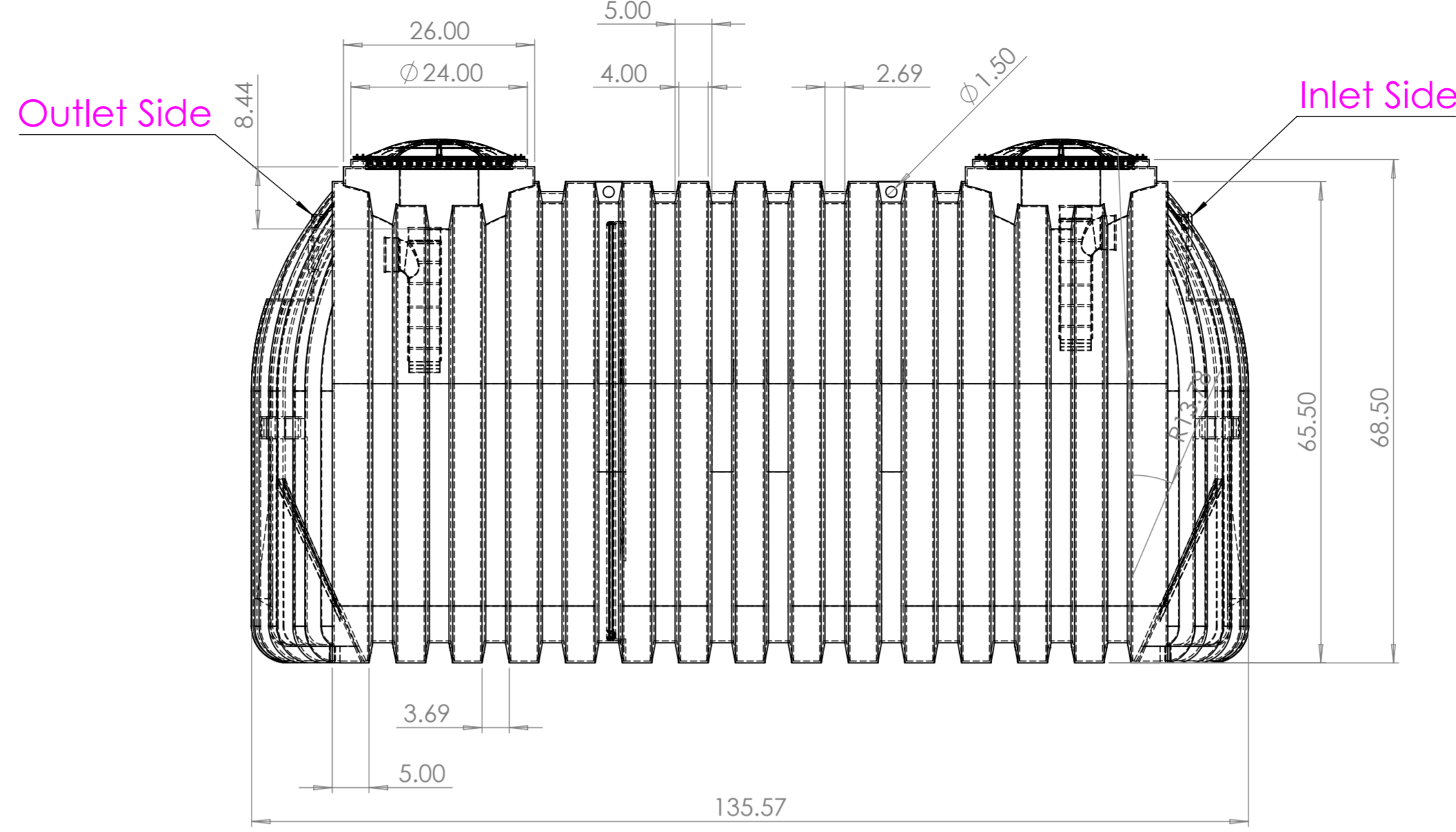
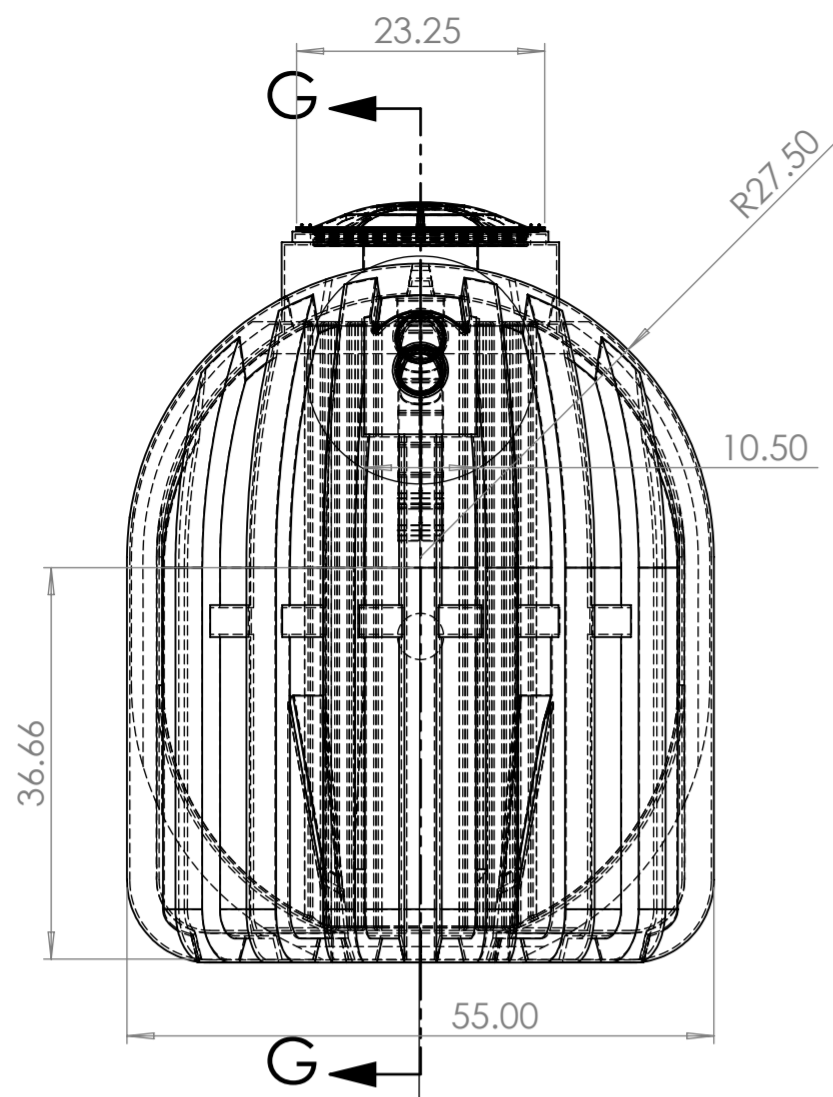
ITEM #	MFGR PART #	DESCRIPTION	QTY
1	87-41760	1500g 2C HDPE Septic Tank	1
2	WTL-001-FM	Tank Adapter Ring	2
3	SPL-BR-004	4 Inch Inlet/Outlet Tee	2
4	85-SPL-ER-G	4 Inch Gasket	2
5	85-SPL-001-L	20" Black Domed Lid; SS Screws	2

UNLESS OTHERWISE SPECIFIED: DIMENSIONS ARE IN MILLIMETERS		FINISH:		DEBURR AND BREAK SHARP EDGES		DO NOT SCALE DRAWING		REVISION	
SURFACE FINISH:									
TOLERANCES:									
LINEAR:									
ANGULAR:									
DRAWN		NAME	SIGNATURE	DATE			TITLE:		
CHKD							87-41760 1500 GALLON TWO COMPARTMENT HDPE SEPTIC TANK		
APPVD							DWG NO.		A2
MFG									
Q.A.									
		MATERIAL:							
		WEIGHT:							
								SCALE:1:20	
								SHEET 2 OF 7	



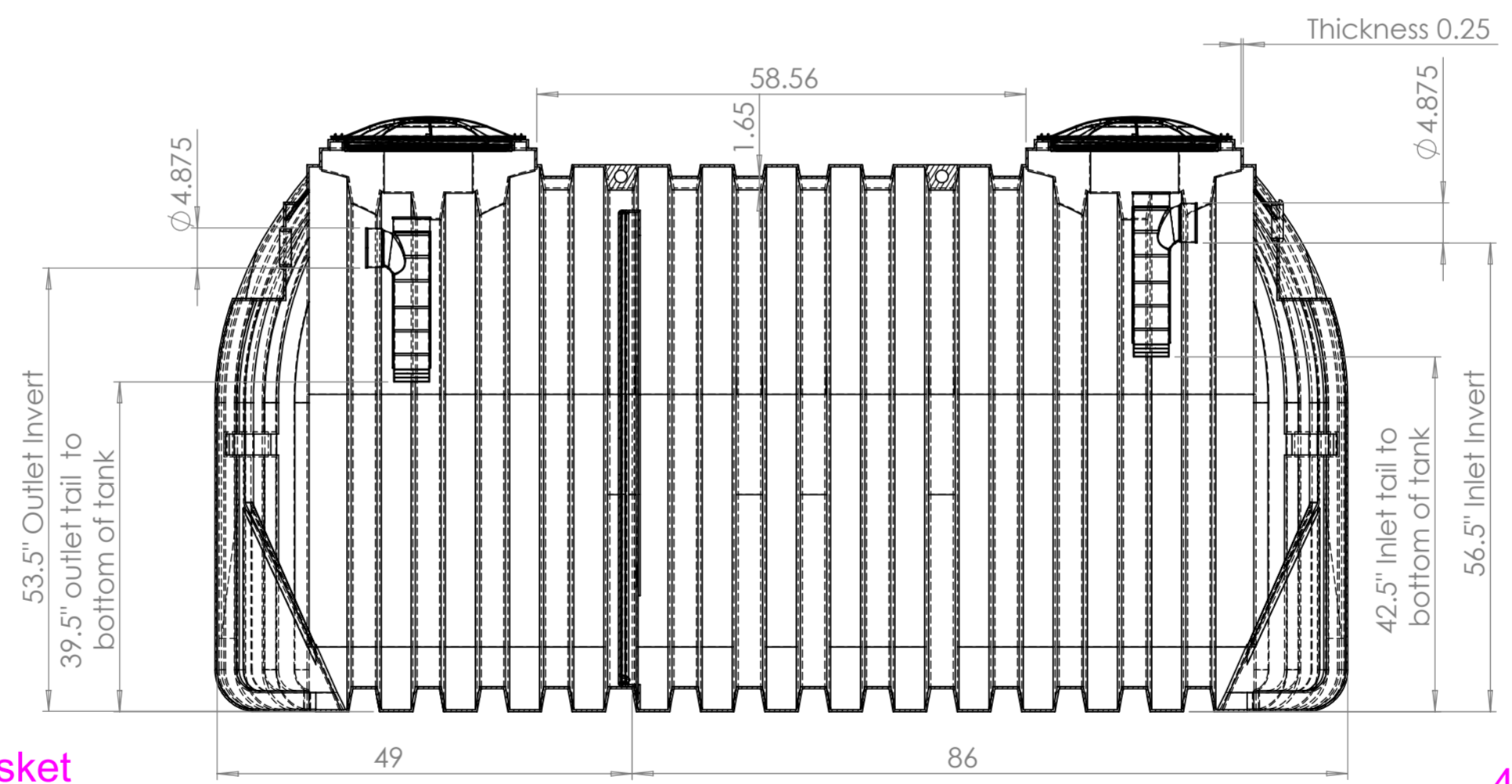
12 11 10 9 8 7 6 5 4 3 2 1

H
G
F
E
D
C
B
A

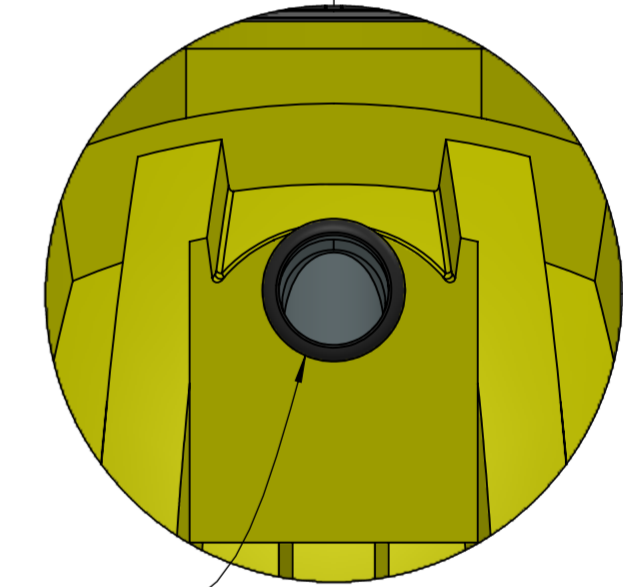


DETAIL K
SCALE 1:7

4" Gasket (Outlet Side)



SECTION G-G
SCALE 1:18



4" Gasket (Inlet Side)

DETAIL J
SCALE 1:7

Operating Volume (Gls)
Primary Compartment: 1006
Secondary Compartment: 494

Complies with FDA standards 21 CFR 177.1520 (1) 3.1 and 3.2
3 year limited warranty

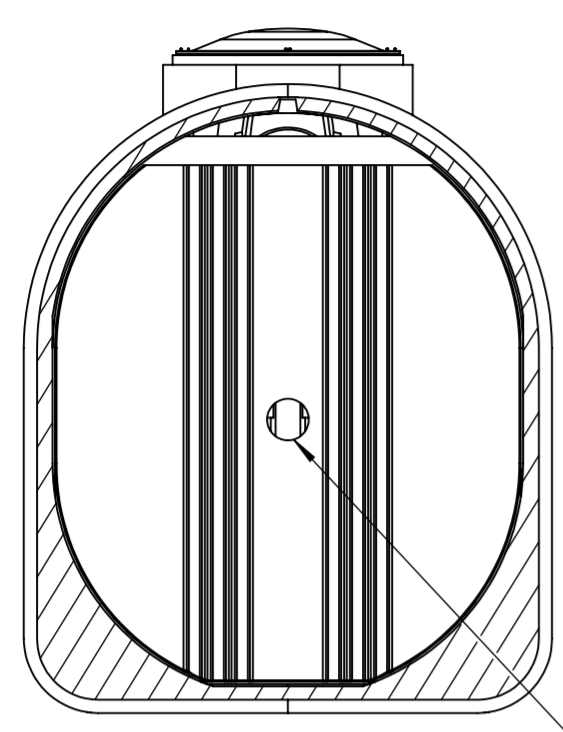
Municipal and County codes may vary from your state approval.
Please make sure you consult with your local sanitation department or plumber on requirements.

UV resistant BPA Free HDPE
Empty weight: 458
Shipping Class: 300
Includes 2 4" tees and gaskets

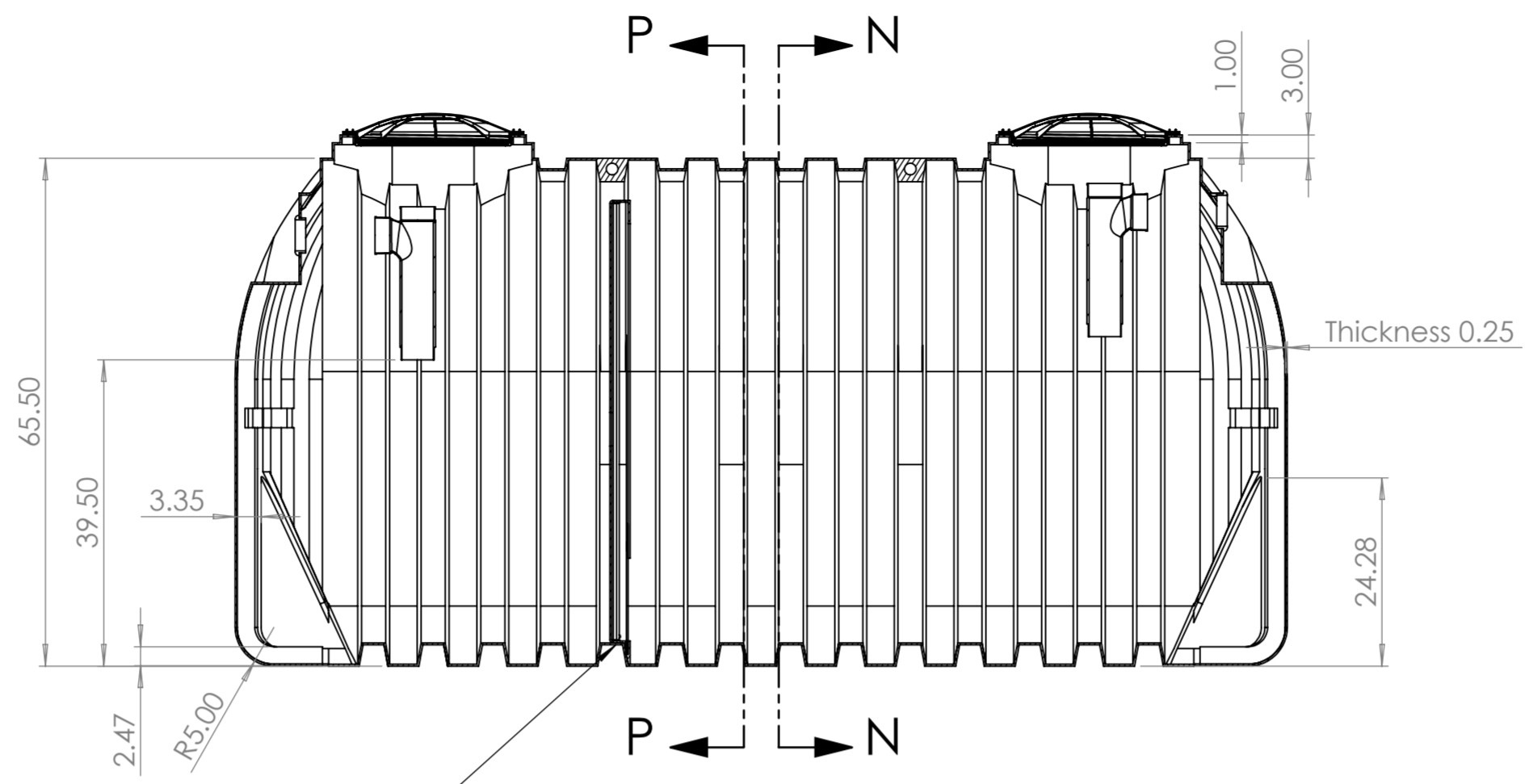


UNLESS OTHERWISE SPECIFIED: DIMENSIONS ARE IN MILLIMETERS			FINISH:			DEBURR AND BREAK SHARP EDGES			DO NOT SCALE DRAWING		REVISION		
SURFACE FINISH:													
TOLERANCES:													
LINEAR:													
ANGULAR:													
DRAWN			NAME			SIGNATURE			DATE			TITLE:	
CHKD												87-41760 1500 GALLON TWO COMPARTMENT HDPE SEPTIC TANK	
APPVD												DWG NO.	
MFG												A2	
Q.A.												SCALE:1:20	
MATERIAL:												SHEET 3 OF 7	
WEIGHT:													

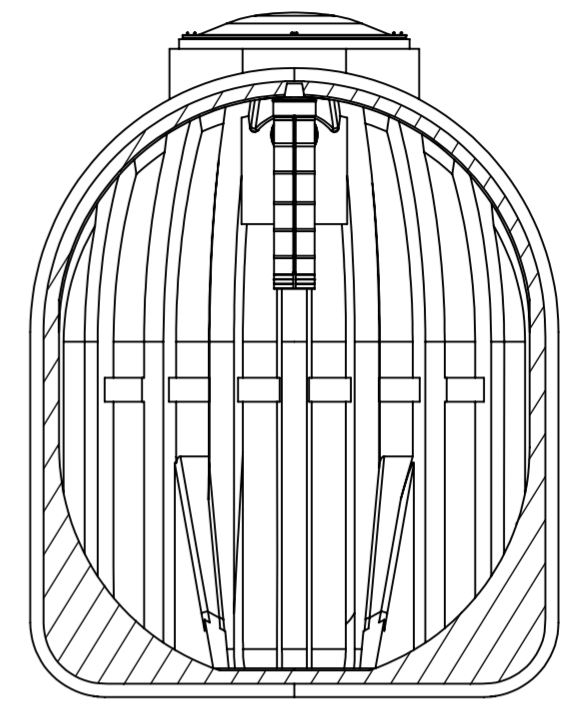
12 11 10 9 8 7 6 5 4 3 2 1



SECTION P-P
Outlet side



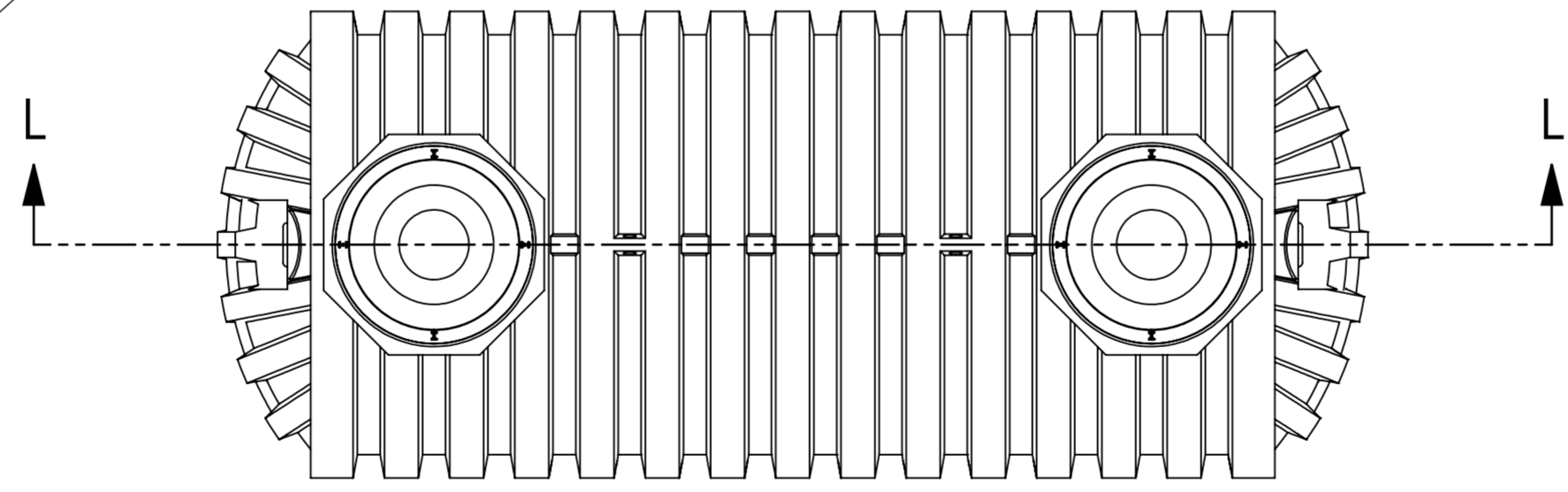
SECTION L-L



SECTION N-N
Inlet side

Baffle

Baffle placement:
86" from side wall to baffle on 2/3 (inlet) side;
49" from side wall to baffle on 1/3 (outlet) side.
59.8" tall x 54.3" wide x 2.6" deep.



Operating Volume (Glns)
Primary Compartment: 1006
Secondary Compartment: 494

Complies with FDA standards 21 CFR 177.1520 (1) 3.1 and 3.2
3 year limited warranty

Municipal and County codes may vary from your state approval.
Please make sure you consult with your local sanitation department
or plumber on requirements.

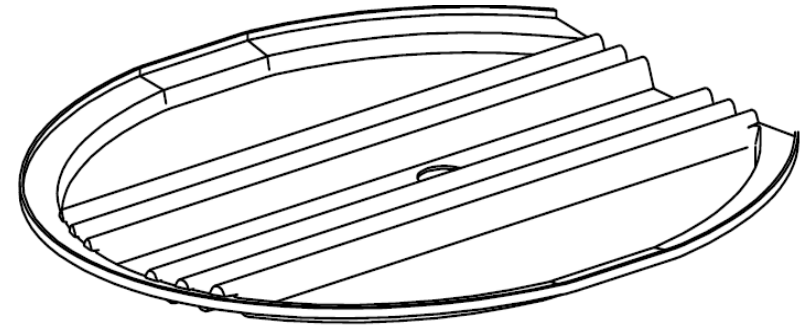
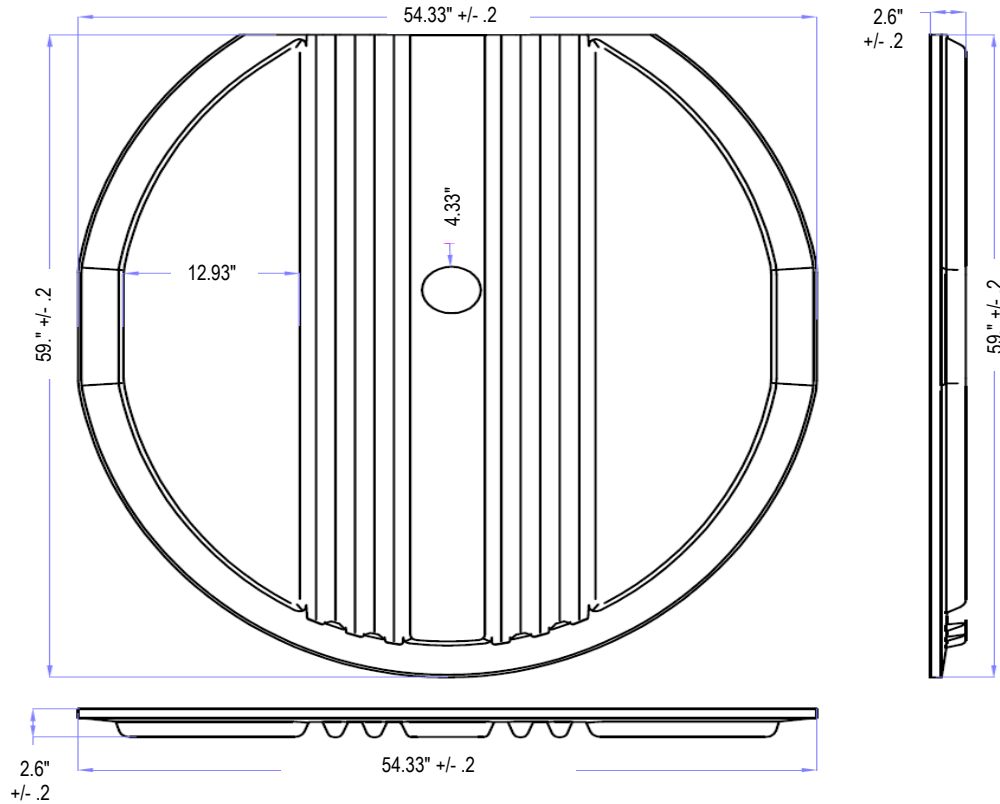
UV resistant BPA Free HDPE
Empty weight: 458
Shipping Class: 300
Includes 2 4" tees and gaskets



UNLESS OTHERWISE SPECIFIED: DIMENSIONS ARE IN MILLIMETERS			FINISH:			DEBURR AND BREAK SHARP EDGES			DO NOT SCALE DRAWING		REVISION		
TOLERANCES: LINEAR: ANGULAR:									TITLE: 87-41760 1500 GALLON TWO COMPARTMENT HDPE SEPTIC TANK				
DRAWN			NAME			SIGNATURE			DATE			DWG NO.	
CHKD												A2	
APPVD												SCALE:1:20	
MFG												SHEET 4 OF 7	
Q.A.													
MATERIAL:													
WEIGHT:													



Valencia Pipe Company
 1500g Septic Baffle
 Part # 85-ST-1500-BL



Technical parameters:

1. The product is a single-layer blister, black, HDPE, and thickness of 6mm.
2. The draft angle inside the product cavity is 3 degrees.
3. The surface is flat, the mold font can be read, without obvious wrinkles, cracks, or deformation, and the product edges are free of burrs and sharp corners.
4. All surfaces of the product shall be free of any obvious floating ash, oil stains, water stains, or material scraps, and shall not be bonded with tailings or other miscellaneous materials.
5. The color should be consistent with the color palette. If there is a slight color difference, a distance of 1 meter should be used for daytime outdoor comparison, and there should be no obvious color difference or impurities. The color of the same batch of goods should be consistent.
6. Tolerance requirements: length width ± 5 mm, height ± 5 mm, product weight 9.9kg, weight tolerance ± 0.5 kg.
7. Applicable temperature: $-25\text{ }^{\circ}\text{C}\sim 55\text{ }^{\circ}\text{C}$ ($-13^{\circ}\text{F}\sim 131^{\circ}\text{F}$).

Baffle placement: 65" from side wall to baffle on 2/3 (inlet side); 35" from side wall to baffle on 1/3 (outlet side).

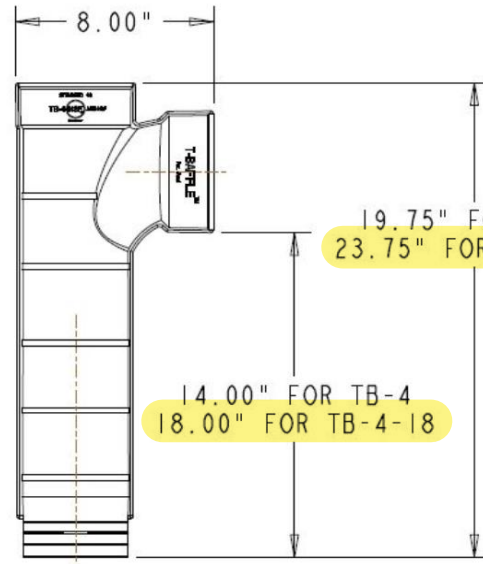
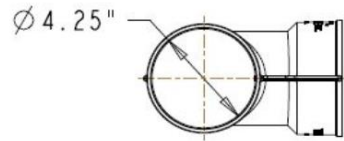
UNLESS OTHERWISE SPECIFIED: DIMENSIONS ARE IN INCHES SURFACE FINISH: TOLERANCES: LINEAR: ANGULAR:		FINISH:		DEBURR AND BREAK SHARP EDGES	DO NOT SCALE DRAWING	REVISION
	NAME	SIGNATURE	DATE	TITLE:	1500 GALLON TWO COMPARTMENT SEPTIC TANK INTERNAL BAFLE	
DRAWN			12/11/2023			
CHKD	D. Simon		March 2024			
APPV'D						
MFG						
QA				MATERIAL: High Density Polyethylene (HDPE)		
				WEIGHT: 19 lbs	SCALE:	SHEET: 1 OF 1



Valencia Pipe Company

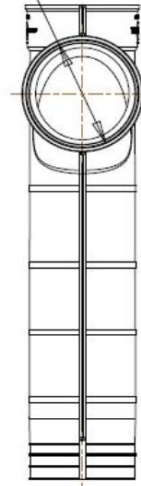
4" Baffle Tee

Model # SPL-ER-004



Ø 4.25" BUSHING (SDR35)

Ø 4.50" (SCH40)



Material: High-Impact ABS
Color: White

Item #	Mfgr Part #	Description	Qty
1	SPL-ER-004	4" white ABS ANSI/NSF baffle tee	1

UNLESS OTHERWISE SPECIFIED: DIMENSIONS ARE IN INCHES SURFACE FINISH: TOLERANCES: LINEAR: ANGULAR:	FINISH:			DEBURR AND BREAK SHARP EDGES	DO NOT SCALE DRAWING	REVISION
	NAME	SIGNATURE	DATE	TITLE:		
DRAWN	Tuf-Tite					
CHKD	D. Simon		April 2024			
APPV'D						
MFG				MATERIAL:		
QA				WEIGHT: 1 lb 3 oz	SCALE:	SHEET: 1 OF 1